



# 7x5mm PECL O/P TCXO/VC-TCXO

10.00 MHz to 800.00 MHz

AEL MWP430-Series TCXO

AEL VMWP430-Series VC-TCXO



## Operating Conditions

Operating Temperature Range		Frequency Stability (PPM)					
		±1	±2	±2.5	±3.0	±4.0	±5.0
Standard	-0°C to +50°C	✓	✓	✓	✓	✓	✓
Industrial	-30°C to +85°C	X	✓	✓	✓	✓	✓

**Storage Temp** -55°C to +125°C

### Option Codes

Supply Voltage	Option Code
+3.3V DC	3

## Marking & Specification Code Format

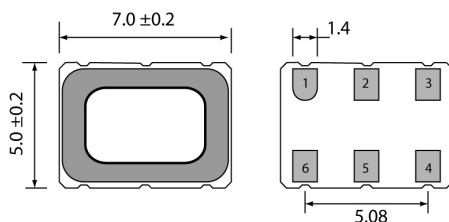
Type	Voltage Code	OTR/Stability	Frequency	Pulling	WWYY
V/MWP431	3	See Above	ie 27.0000	in PPM	1608

Other Temp./stabilities available

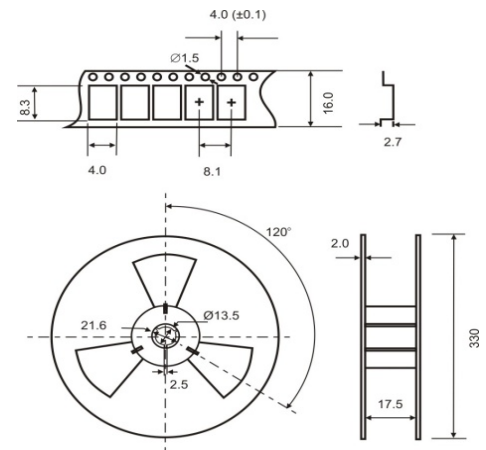
Parameter	Condition		
Input Current 15pF Load	< 24 MHz	25mA Max.	
	24.01 to 96.00 MHz	65mA Max.	
	96.01 to 800.0 MHz	100mA Max.	
Frequency Stability	Over Temperature	See Options Above	
	vs Ageing	≤ ±1.0PPM 1st year at 25°C	
	vs Voltage Change	≤ ±0.3PPM for a 5% input voltage change	
	vs Load Change	≤ ±0.3PPM for a 10% load change	
	vs Reflow Solder	≤ ±0.3PPM 260°C reflow after 24hrs	
Symmetry	@50% VDD Level	45/55%	
Output Voltage	"0" Level	V <sub>DD</sub> -1.620 Max. Termination: R <sub>L</sub> =50Ω to (VDD-2.0V)	
	"1" Level	V <sub>DD</sub> -1.025 Min. Termination: R <sub>L</sub> =50Ω to (VDD-2.0V)	
Rise/Fall Time	20% to 80% of PECL Waveform	1.5ns Max.	
Start Up Time	0V to V <sub>DD</sub>	10mS Max.	
Load		R <sub>L</sub> =50Ω to (V <sub>DD</sub> -2.0V)	
VC-TCXO VMWP43 Only	Control Voltage	1.5V ±1.0V	
	Pulling Range	Standard	±5PPM to ±12PPM (To be specified)
		Narrow	±1PPM Max. or custom
		Wide	±25PPM Min. or custom
Reflow Solder Condition		260°C 10 seconds Max.	
Jitter at 155.520 MHz	Period Jitter (RMS) Typical	5ps	
	Period Jitter (Peak to Peak)	28.0 ps	
Phase Noise at 155.520 MHz	100 kHz offset	-119dBc/Hz	

## Dimensions (mm)

1000pcs/Reel



- Pin Connections
- Pin 1 VCONT (VC-TCXO Only)
  - Pin 2 Tristate
  - Pin 3 Ground
  - Pin 4 Output
  - Pin 5 PECL/LVDS Output
  - Pin 6 VDD



Static sensitive device